

# THE BEEF PRODUCERS REFERENCE STATION

## TODAY

- ↪ More than 100 bulls bought for A.I.  
"EARLY BEEF" progeny test programme
- ↪ 4 000 bulls evaluated since 1983

Edelweiss MN



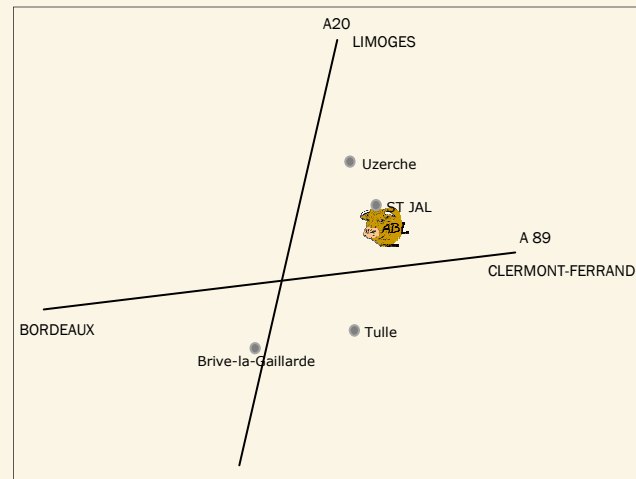
RREVS

Uskudar



RREVB

## ACCESS MAP



## Station ABL

Le bois Cousin 19700 St JAL

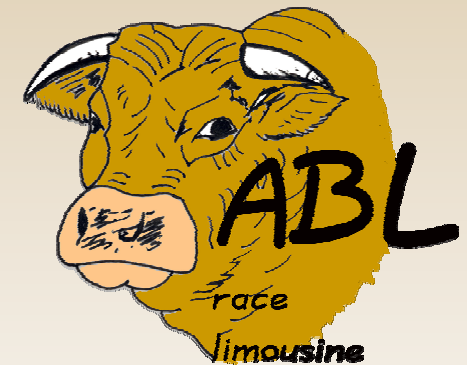
Contact : Jacques FREYSSAINGE

05.55.73.02.03 ou 06.08.33.79.39

<http://www.limousin.synagri.com/synagri/station-coop-abl-page>

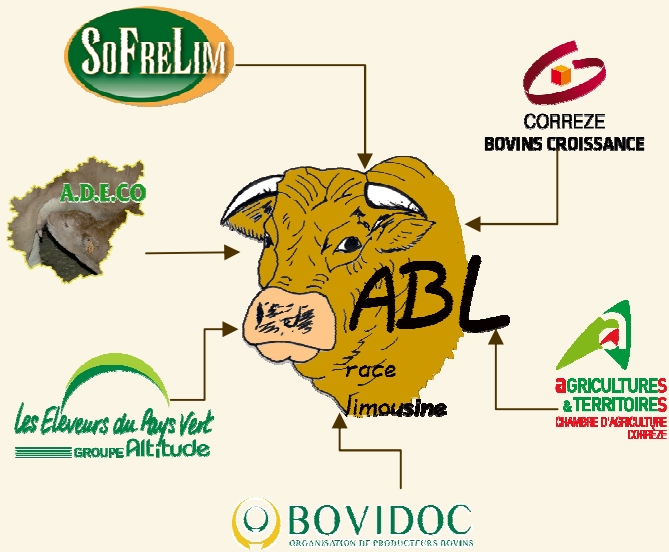


# Station ABL

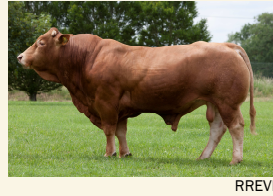


Le Bois Cousin  
19700 SAINT-JAL  
05 55 73 02 03  
06 08 33 79 39

# ABL PARTNERS



Donzenac



## HOW DOES IT WORKS ?

- ✓ 2 groups evaluated each year
- ✓ Young bulls choosed at weaning with the best beef and maternal values
- ✓ 5 months evaluation period according to IDELE (French Breeding Institute) Official protocol
- ✓ Official IDEL attested figures
- ✓ RCV classification by HBL (French Limousine Society ) RCV : Pedigree sire attested for beef production, in french : Reproducteur Conseillé Viande)
- ✓ Complete catalog available before the sale
- ✓ Possibility to see the animals before the sale
- ✓ Public auction

## SOME GOOD REASONS TO BUY A ABL PEDIGREE BULL

- ➔ Strict and successive sorting during the protocol
- ➔ Certified pedigrees
- ➔ Sanitary guarantees
- ➔ Official genetic values
- ➔ Complete catalog
- ➔ Young bulls old enough for natural service
- ➔ Large choice
- ➔ Simple and plain conditions of sale

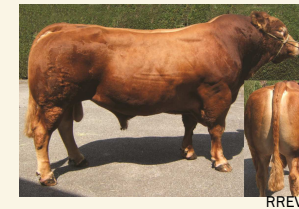
## HISTORY

- 1981 - ABL (Association Bovine Limousine) is created
- 1983 - First shed built for 56 animals
- 1989 - Enlarging to 88 animals
- 1993 - Moved to a new place with 2 new sheds for 160 animals
- 1996 - Capacity reaches 200 animals

Bonsoir



Ebène MN



Favars

